

Cuming County Public Power District

West Point, Nebraska

June 2020

A Message from our GM, Chet McWhorter

So, we find ourselves in the third month of my writing under the influence of the COVID 19 Pandemic. I am, once again, going to first admit that I thought we'd be well past this by now. My brother in law says that this is going to go on until July 1. He's about as much of a medical expert as I am, but I like his optimism! We are still working our way through this paradigm shift at your power district. We have been figuring out how to maintain our distance, how to ensure that we are retaining excellent hygiene, and continuing to confirm that our customers receive the superb service that they are accustomed to. We're getting ready for irrigation season, as are many of you. I see that most of the crops are in the ground and I'm hopeful that we'll get timely rains and that the crops will all be terrific!

I keep going back to the same set of thoughts through this pandemic and maybe I'm naïve but the thing that keeps bothering me is the idea that some jobs are essential, and others are not considered so. In what world does it make sense to tell someone that they, specifically what they do, is non-essential? I personally do not need a social media influencer, for example, yet they could work through the pandemic. Is that fair to

a barber? If you could see my hair right now, you'd think "hey, that barber's pretty essential to Chet right about now!" Or, I don't really need a massage right now, but that doesn't mean that the family counting on the income from their spa and massage business doesn't think that they are pretty darn essential. The point is, we allowed our leaders to pick winners and losers in a more blatant way than I've seen before. This has always happened to some extent, but this was outright ugly and out in the open. We allowed the greatest economy the world had ever seen to implode over a virus that can't live through a good handwashing and we will need to work hard to come out of the other side of this better than we were before.

All this is a roundabout way of stating that the only good that can come from life's pain is learning. If we can learn and be better, maybe this whole thing can be worth it. If we can learn, again, how to engage in civil discourse, to disagree without belittling, to understand another's viewpoint, we will be better. If we learn to wash our hands, which meetings are really important and which ones can be just a phone call or just an email, what trips are important to take, you know, seeing your kids



or grandkids, versus going to a conference that could've been a webinar, then we'll be better. You see, in my opinion, if we return to normal, we lose. It will do none of us to return to the normal we had before. We need to return to a better normal, a kinder normal, a more appreciative normal, and a normal that allows us the time and space to go to those we love and to take care of those who cannot take care of themselves. That is a normal that I can get behind, no matter what it took to get us there.

I hope all who are reading are healthy. I hope you have someone around to visit with. I hope you've taken advantage of the little bit of extra time to do something that you had put off. Mostly, I thank you for taking your time to read this. I hope I'll get to see many of you very soon. Take care of one another!



Board Member Spotlight

Ed Kaup



Ed Kaup, Board Member,
Subdivision II. 1995-2024

Each month, we will feature a Cuming County Public Power District board member. This month we will feature Ed Kaup. Ed has a long history with the electric industry. He has served on the Cuming County Public Power District board for 25 years.

He has enjoyed his time on the board. Ed said, "I have enjoyed being a director and watching trends change over the years. The electric industry has changed so much and it's interesting to see the changes with customers as well."

Responsibilities on the board are many. CCPPD board members partake in monthly meetings, manage issues affecting CCPPD and the electrical industry, and attend seminars and workshops to continue their education. Ed has looked out for CCPPD customers for 25 years and helped make sure rates stayed as low as possible. He said we should be proud as CCPPD

Your CCPPD

Board

Members

is one of the best Power Districts in Nebraska.

Ed and his wife Lynette have been married 55 years in July. They have two children: Dawn and Jason.

Ed also has an interesting history with the electric industry as a whole. He served in the United States Navy after graduating high school in 1959. He volunteered to be stationed on a submarine. The Navy tests people to see what they would be best at and he tested high for the electricity division. He stayed on the same submarine for more than 3 years doing electrical work and then had served his time and came back to Nebraska.

Ed worked for Western Electric in Omaha for half a year and then decided to start his own business in West Point. He owned Kaup Electric for 12 years and enjoyed doing electrical work on farms and for families in town. He then took an interest in farming and sold his electrical business to his brother. Lynette and Ed had a farming operation and feedlot for many years and have only recently retired.

We want to thank our dedicated board members, like Ed, for looking out for the most important part of CCPPD, our customers.



CCPPD's Interns

Trevor Schumacher & Allie Knobbe



Trevor Schumacher joined Cuming County Public Power District as an Intern on April 20, 2020. He will be attending Northeast Community College in the fall. The Utility Line Program will be his focus. Trevor did a job shadow here at CCPPD last year and really enjoyed the work.

Trevor is originally from Howells and likes the small town atmosphere. He enjoys spending time with family and friends and would enjoy staying in this area after he completes school. He is the youngest of seven kids; 2 older brothers and 4 older sisters. His mom is a Para at Howells Dodge Consolidated Schools and his dad is a Veterinarian.

Please help us welcome Trevor to Cuming County Public Power District and we also want to wish him well at school in the fall!



Allie Knobbe joined Cuming County Public Power District as an Intern on May 11, 2020. She will be returning to University of Nebraska at Lincoln in the fall. She is studying Speech Pathology.

Allie is from West Point and has lived in Cuming County all her life. She would like to come back to the area when finished with college.

She said she is interested in learning more about the business side of CCPPD and meeting and getting to know new people. She will help in the front office area so you may hear a new voice on the phone.

Family is important to Allie. She and her two sisters: Kate & Hanna and her mom Melissa enjoy playing card games and getting together with extended family. Her hobbies include hanging out with friends, airboating, going to the lake, and running.

Please help us welcome Allie to Cuming County Public Power District and we also want to wish her well at school in the fall!

Linemen Help Set Flag Pole

for Beemer American Legion

The Cuming County Public Power District linemen helped the Beemer American Legion members set a 70 foot flag pole on April 21, 2020. The Legion Members wanted a flag pole that could be seen from the highway and from long distances. It sits in front of the Legion building on main street in Beemer. Drive by and take a look!



How a Tree Becomes a Power Pole

Ever wonder how a tree becomes a utility pole? In the United States, most electric distribution poles are made from southern yellow pine, a species grown throughout the Southeastern region of the country.

Virtually all of these distribution poles are cut from carefully managed stands of timber, usually from 35 to 40 years of age. Only about 15 to 20 percent of pole size trees are actually of high enough quality physically for possible use as utility poles.

Once harvested, the selected trees are delivered to a processing facility for debarking and machining. After being cut to the desired length, they are measured to determine the proper size class. The pole's class determines its load capacity.

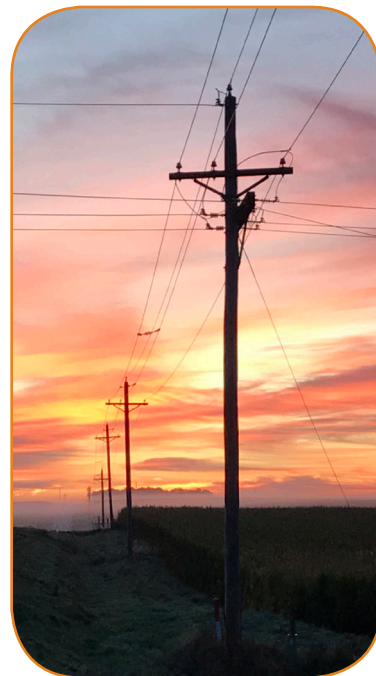
Next, poles are dried and sterilized to kill any decay spores that may be present in the wood, a process that normally takes 1 to 3 days.

After the poles are dried, they are spread out on skids for framing and inspection. Framing consists of cleaning any bark left over on the poles from peeling, putting required gains on the poles, boring all necessary holes, and applying burn brands or inset metal tags to the face of the pole. These tags identify the producer, date of treatment, preservative, required preservative retention, length and class of the pole. Once the framing process

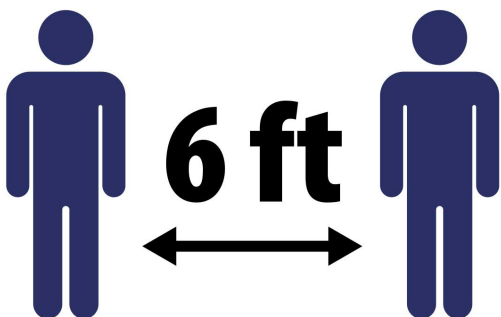
is completed, poles are inspected by the producer and then by any outside inspection requested by the consumer.

After framing and inspection, the poles are placed on wheeled trams and loaded into long metal treating cylinders that are sealed prior to the poles being subjected to a pressure/vacuum treating cycle. After treatment, sample borings are taken from the treated poles and analyzed to determine if the desired preservative penetration and retention requirements have been met.

If a pole meets all physical and treatment requirements, it's ready for shipment to your electric cooperative where it's installed to support power lines in your community delivering the safe, reliable power you depend on.



Please Help Keep Our Crews Safe



We are practicing social distancing while we carry out our essential work. Please maintain a safe distance to prevent the spread of infection.

Thank you for your cooperation.

Cuming County Public Power District

500 South Main Street West Point NE 68788
402-372-2463 or 877-572-2463

Regular meetings of the CCPPD Board are normally held on the second Wednesday of each month at the CCPPD office.

Greg Strehle, President
402-380-3659

Leroy Mostek, Vice President
402-528-3872

Dennis Weiler, Secretary
402-372-2713

Ed Kaup
402-372-2966

Danny Kluthe
402-693-2833

C
C
P
P
D

B
O
A
R
D